

# The angler trip goes to the Limfjord

– a tourism cooperation project



**LAG**  
LOKALE  
AKTIONS  
GRUPPER



The European Union  
The European Maritime  
and Fisheries Fund



The European Agricultural  
Fund for Rural Development:  
Europe investing in rural areas

# PROJECTHOLDER

## Limfjord Council

The Limfjord Council is a cooperation between 18 municipalities around the Limfjord – nine of them are part of this project.

Together they work for a clean and sustainable Limfjord, for the benefit of the nature and all those who move and reside there.

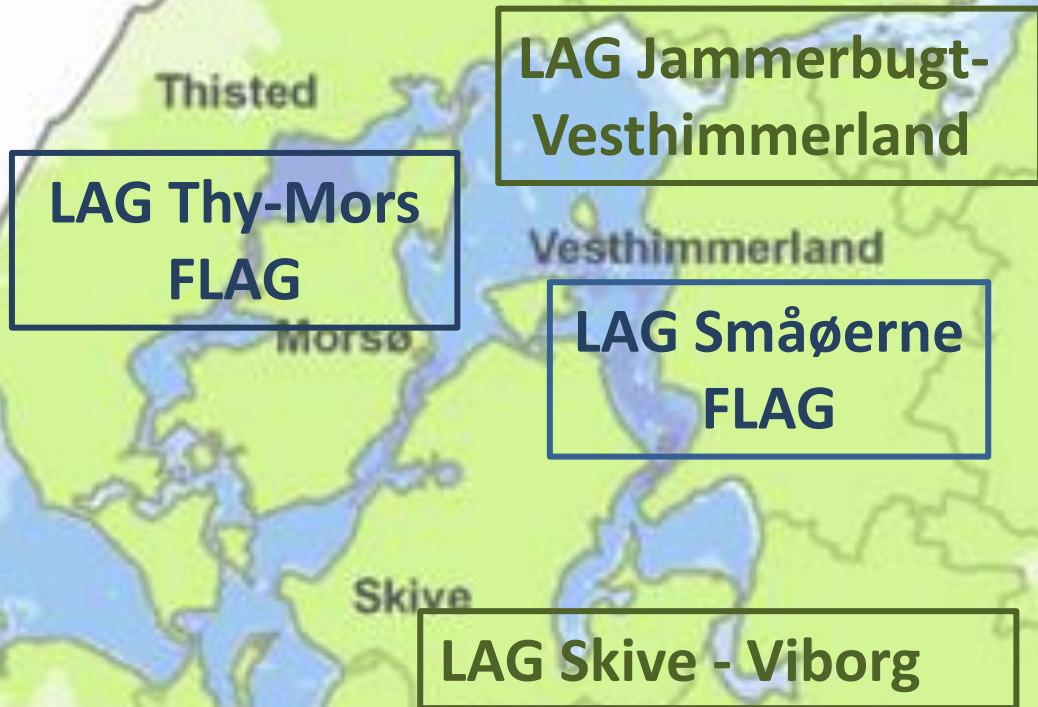


The European Union  
The European Maritime  
and Fisheries Fund



The European Agricultural  
Fund for Rural Development:  
Europe investing in rural areas

# AND 2 FLAG's and 2 LAG's



**LAG**  
LOKALE  
AKTIONS  
GRUPPER



The European Union  
The European Maritime  
and Fisheries Fund



The European Agricultural  
Fund for Rural Development:  
Europe investing in rural areas

# MAINGOAL

The main goal of the project is to use the angler tourism as a generator for growth and development by making the Limfjord an attractive destination for anglers.

But the tourism industry points out, that there is a lack of products in the form of services and experience offers.

The project will facilitate a process for local companies around the Limfjord, that want to become a certified partner with special knowledge of the angler tourists. Also the project will provide relevant marketing material and inspire to angling in the Limfjord.



The European Union  
The European Maritime  
and Fisheries Fund



The European Agricultural  
Fund for Rural Development:  
Europe investing in rural areas

# RESULTS

[www.seatroutlimfjorden.com](http://www.seatroutlimfjorden.com)

## UNTIL NOW

A solid network of 60 certified "angler-friendly" partners.

- 45 accommodations
- 6 tackle shops
- 3 boat and kayak rentals
- 6 local guides

A professional marketing package for partners.

- An angler guide for the Limfjord
- A fishing calendar
- Physical signs at local point of interest
- Partner logo, stickers etc.

# Why / Benefits / Complications

- Based on the goal – to make the Limfjord an attractive destination for anglers - it was simply the logical choice
- The number of actors the projectholder came into contact with became very large
- YES – but the main part was issues about basic practicalities.



The European Union  
The European Maritime  
and Fisheries Fund



The European Agricultural  
Fund for Rural Development:  
Europe investing in rural areas

THANK YOU FOR YOUR TIME

Hope to see you later

Contact projectholder:  
Carsten Rømming Sørensen  
carsten.soerensen@aalborg.dk

Contact FLAG:  
Inger Bøgh Bisgaard  
info@lag-thymors.dk

 LYSTFISKERI I LIMFJORDEN

 ANGELN AM LIMFJORD

 ANGLING IN THE LIMFJORD

- HAVØRRED/MEERFORELLE/SEA TROUT MINIGUIDE



## Angeling guide for the Limfjord

in danish, german and english, 20 pages

### Content:

- Know your fish
- Fishing Tips for the Limfjord
- Season calendar for sea trout
- Hotspots of the Limfjord
- Know your fish (other species)
- Rules and Regulations



The European Union  
The European Maritime  
and Fisheries Fund



The European Agricultural  
Fund for Rural Development:  
Europe investing in rural areas





Scan QR koden og køb guiden.

Scannen, um den Führer zu kaufen.

KØB GUIDEN "LYSTFISKERI I LIMFJORDEN" OG FÅ ADGANG TIL 100 AF DE BEDSTE FISKEPLADSER.

# FISKEKALENDER

(Fishing Calendar | Fisch-Kalender)

# Fishing Calendar



## LIMFJORDEN



### HAVØRRED

Sea trout | Meerforellen



### HORNFISK

Garfish | Hornhecht



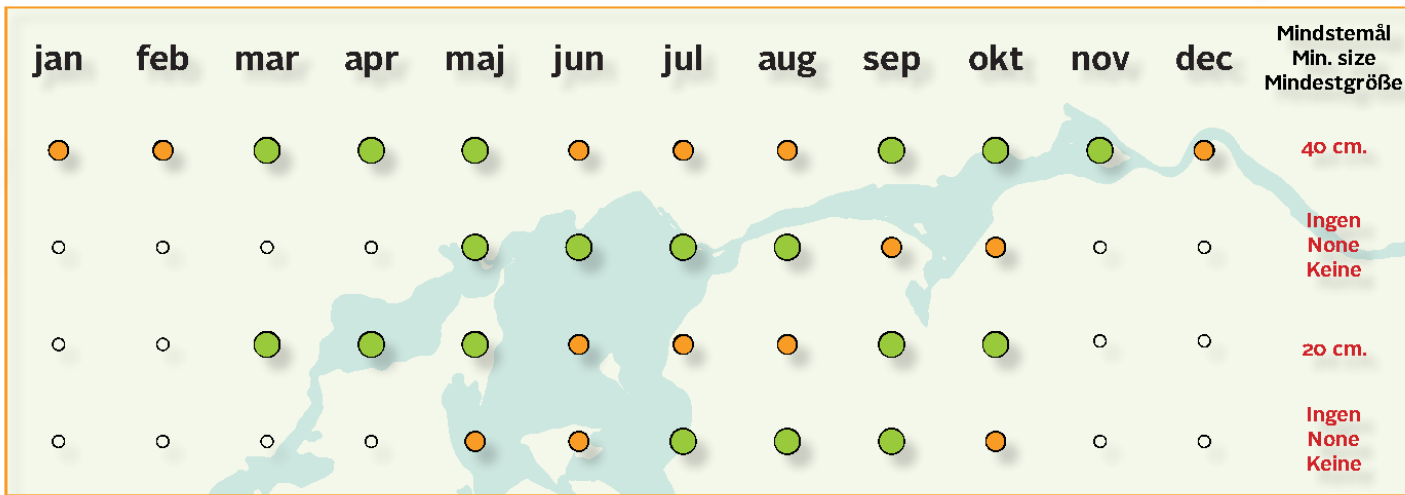
### SILD

Herring | Herring



### MULTE

Mullet | Meerasche



## ØST- OG VESTKYSTEN (East- and westcoast | Ost- und Westküste)



### HAVBARS

Wolfarsch | Sea bass



### TORSK

Cod | Dorsch



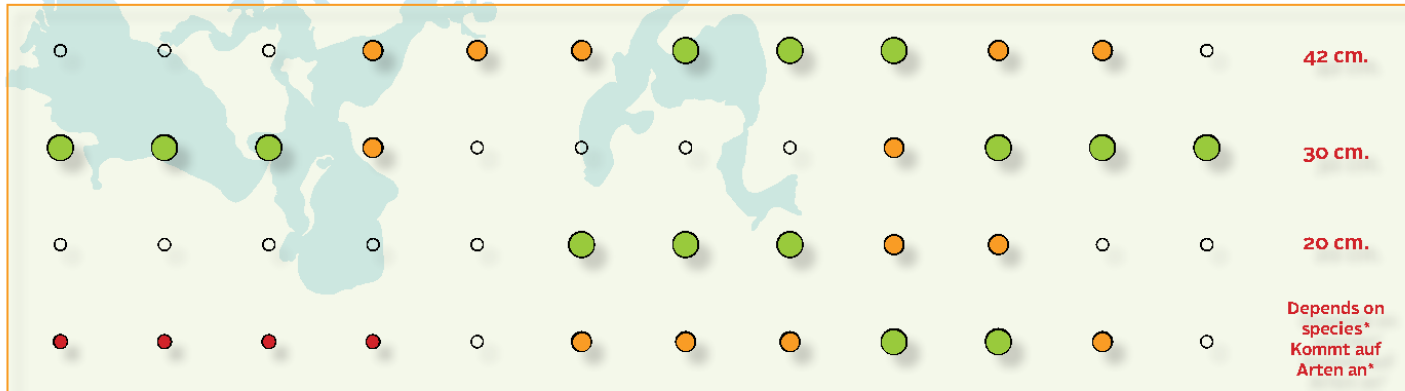
### MAKREL

Mackerel | Felchen



### FLADFISK

Flatfish | Plattfisch

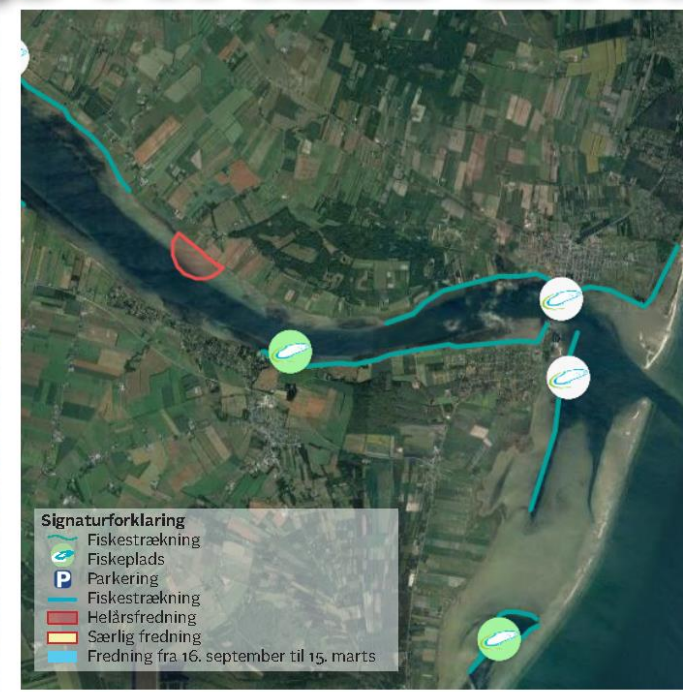


- Højsæson ● Lavsæson ○ Uden for sæson ● Fredet
- High Season ● Low season ○ out of season ● Protected
- Hochsaison ● Nebensaison ○ Außerhalb der Saison ● Schonzeit

\*Read more at [www.fisketegn.dk](http://www.fisketegn.dk)


\*Lesen Sie mehr unter [www.fisketegn.dk](http://www.fisketegn.dk)


# FANG VILDE HAVØRREDER!




**Signaturforklaring**

- Fiskestrækning
- Fiskeplads
- Parkering
- Fiskestrækning
- Helårsfredning
- Særlig fredning
- Fredning fra 16. september til 15. marts

 Mou Lystbådehavn ligger i den østlige del af Limfjorden mellem Aalborg og Hals. Det er et område, der byder på et spændende og meget forskelligartet fiskeri – lige fra hardcore Havørred-pladser i Limfjorden til fiskepladserne ved Hals og Egenese, hvor du kan fange stortset alt. Fx Makrel, sild, Rødspætter, Pighvar – og naturligvis er chancerne for Havørred også rigtig gode, da de trækker ind og ud af Limfjordsmundingen ved Kattegat.

 Mou Marina liegt im östlichen Teil des Limfjords zwischen Aalborg und Hals. Es ist ein Gebiet, das aufregendes und sehr abwechslungsreiches Angeln bietet - von Hardcore-Meerforellengebieten im Limfjord bis zu den Angelstellen in Hals und Egenese, wo Sie so gut wie alles fangen können. Zum Beispiel Makrele, Hering, Scholle, Steinbutt - und natürlich auch Meerforellen, die in der Limfjordsmündung am Kattegat ein- und ausgehen.

 Mou Marina is located in the eastern part of the Limfjord between Aalborg and Hals. It is an area that offers exciting and very diverse fishing - from hardcore Sea Trout sites in the Limfjord to the fishing spots at Hals and Egenese where you can catch just about everything. For example, mackerel, herring, plaice, turbot - and of course the chances of sea trout are also really good as they pull in and out of the Limfjord estuary at the Kattegat.

Ved pladserne i Limfjorden omkring Mou og pladserne på Kattegatkysten kan du både fiske på det lave vand nær kysten, eller du kan vade et stykke ud og fiske i og omkring de dybe og ofte strømfulde render. Et par kilometer vest for Mou løber et af Danmarks mest produktive Havørred-vandløb – Lindenberg Å, ud i Limfjorden og det er én af forklaringerne på, at der ofte er fisk i denne del af fjorden.

An den Orten im Limfjord um Mou und an den Orten an der Kattegat-Küste können Sie sowohl im flachen Wasser nahe der Küste fischen, als auch ein bisschen waten und in und um die tiefen und oft gefüllten Bäche fischen. Einige Kilometer westlich von Mou mündet einer der produktivsten Meeresforellenbäche Dänemarks - Lindenberg Å - in den Limfjord. Dies ist eine der Erklärungen dafür, dass es in diesem Teil des Fjords häufig Fische gibt.

At the places in the Limfjord around Mou and the places on the Kattegat coast you can both fish in the shallow water near the coast, or you can wade out a bit and fish in and around the deep and often filled streams. A few kilometers west of Mou, one of Denmark's most productive sea trout streams - Lindenberg Å, runs into the Limfjord and this is one of the explanations that there are often fish in this part of the fjord.

PLANLÆG DIN FISKETUR PÅ:



[WWW.HAVORREDLIMFJORDEN.DK](http://WWW.HAVORREDLIMFJORDEN.DK)

PLANEN INRE ANGELPARTIE AUF:



[WWW.MEERFORELLELIMFJORDEN.DE](http://WWW.MEERFORELLELIMFJORDEN.DE)

PLAN YOUR FISHING TRIP AT:



[WWW.SEATROUTLIMFJORDEN.COM](http://WWW.SEATROUTLIMFJORDEN.COM)

## REGLER

Lystfiskeri fra kysterne i Danmark er tilgængeligt for alle og der er ganske få regler du skal sætte dig ind i, før du går i gang.

PLANLÆG DIN FISKETUR PÅ: [WWW.HAVORREDLIMFJORDEN.DK](http://WWW.HAVORREDLIMFJORDEN.DK)

På Havørred Limfjordens interaktive kort kan du planlægge din fisketur. Her kan du se beskrivelser af 100 kendte fiskepladser i og omkring Limfjorden og få et overblik over hvilke pladser, der fisker godt i de forskellige sæsoner. Du kan også finde grejbutikker, bådudlejning, lystfiskervenlige overnatningssteder, lokale lystfisker guider og meget, meget mere.



The European Agricultural Fund for Rural Development, Europe Investing in rural areas



The European Union, The European Fisheries and Fisheries Fund

Kalenderen er udarbejdet af Havørred Limfjorden som del af projektet "Fiske tur og går i Limfjorden" med økonomisk støtte fra EØF- og Fiske og Søfiskeriets Læddislinjekasse, LAG Lemmerthøg/Vesthimmerland, LAG Skive/Viborg, FLAG Smørum og FLAG Thy/Mors



# HAVØRRED

# LIMFJORDEN

# CERTIFICERET PARTNER



The European Agriculture  
Fund for Rural Development  
Europe Invests in rural areas



The European Union  
The European Maritime  
and Fisheries Fund

Kalenderen er udarbejdet af Havørred Limfjorden som del af projekt "Fisketuren går til Limfjorden" med økonomisk støtte fra Erhvervsstyrelsen, Landdistriktsnettet, LAG Jammerbugt/Vesthimmerland, LAG Silve/Wiborg, FLAG Småøerne og FLAG Thy/Mors