



*From Sea to Shore; From Disabled to Qualified  
Social Innovation and Entrepreneurship*



## Atelier des Gens de Mer

« *Adapted workshop for fishermen* » SCIC-SARL EA

**Clares & Mer** ESAT / **Arca-Baie** ESAT

« *Fishermen and Oyster-farmer Workshop* »  
*Social Centre of Assistance and Support through Work*

Navicule Bleue ASBL

## Terre-Mer Chantiers

« *Inclusion site for the long-term unemployed* »

ASBL



*From Sea to Shore; From Disabled to Qualified  
Social Innovation and Entrepreneurship*





*From Sea to Shore; From Disabled to Qualified*

# Building blocks

*Social Innovation and Entrepreneurship*

**Project promoter: Navicule Bleue**



**Local participation**  
(including financial) of the relevant stakeholders



**Target group of beneficiaries**

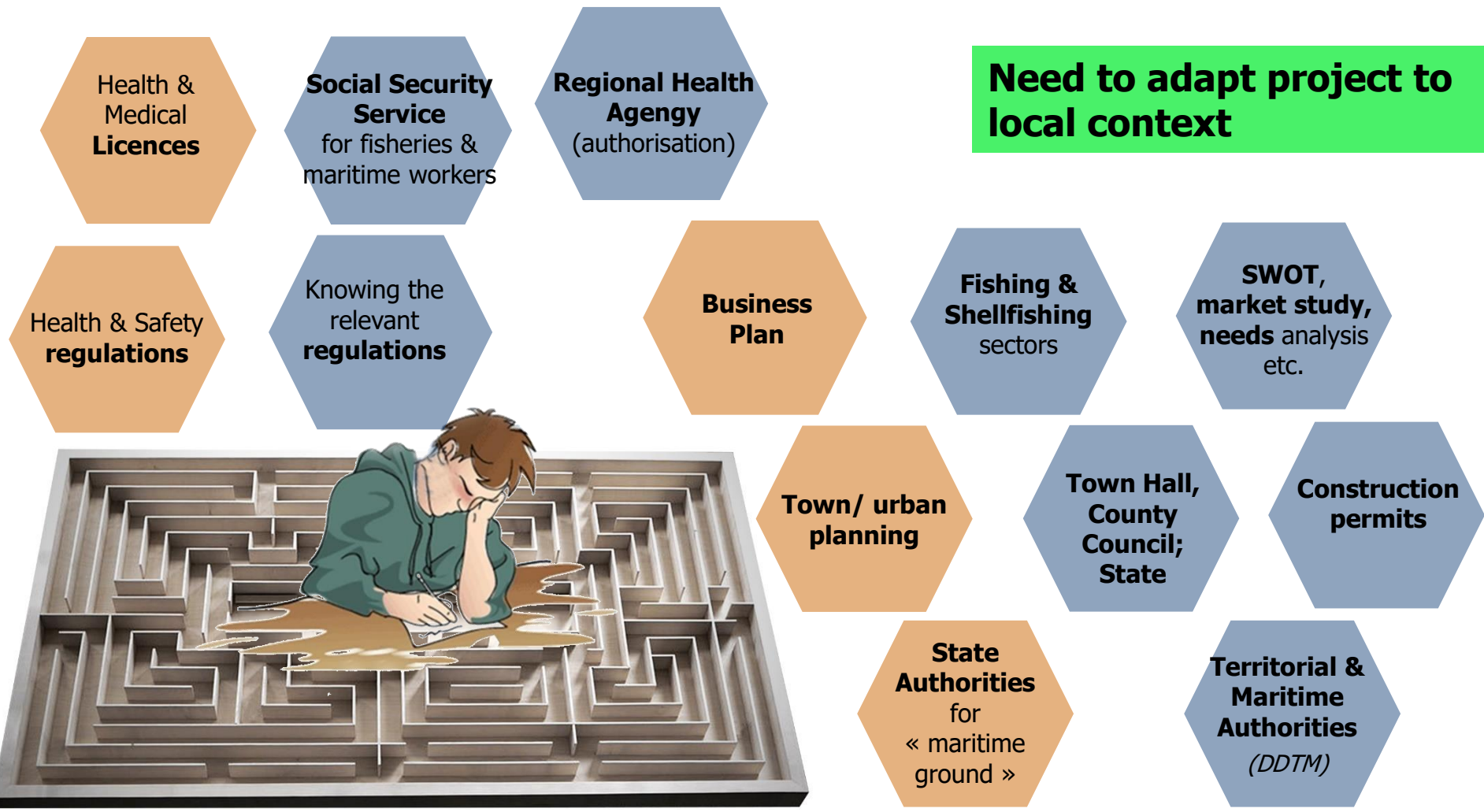




# Complex legislation

*From Sea to Shore; From Disabled to Qualified*  
**Social Innovation and Entrepreneurship**

**Need to adapt project to local context**





*From Sea to Shore; From Disabled to Qualified*

# 3 types of projects developed

Social Integration Enterprises (ESAT)



« **Clares & Mer** »  
&  
« **Arca-Baie** »

Adapted Enterprise  
« **Atelier des Gens de Mer** »



Sheltered Workshop (ACI)  
« **Terre-Mer Chantiers** »



**IMPACT 2007**  
6ème Prix 1er des Projet EA  
Concours Européen Ashoka



**1er Prix 2008**  
« 1000 € pour une Bonne Idée »  
APCE - 15ème Salon des Entrepreneur



**1er Prix Environnement**  
**PELS 2009**  
Fondation Caisse d'Epargne



**Région Poitou-Charentes**  
**Aides CORDEE 2009**  
Création Entreprise + CRDD



**Alcyon 2010**  
**Prix Initiatives**  
Agence de l'Eau Adour Garonne



**1er Prix 2010**  
**Handicap & Territoire**  
Région Poitou-Charentes



*From Sea to Shore; From Disabled to Qualified*



**Atelier des Gens de Mer**, La Cotinière, Oleron Island

**Adapted enterprise to get injured/disabled fishermen back to work in the harbour**

- ✓ *for those with medium level disabilities (work capacity: 70-80%)*
- ✓ *providing services to fishermen and oyster farmers in the harbour*
- ✓ *Maintaining skilled labour in the harbour*

**Number of jobs created: 6 FTE**

**Legal set-up: cooperative** (SCIC-SARL EA)





*From Sea to Shore; From Disabled to Qualified*

## Two Social Integration Enterprise (ESAT)

**To employ people with handicaps, including injured/disabled fishermen and oyster-farmers**



**Clares & Mer**, Marennes Oleron  
**Number of jobs : 80 FTE**

FLAG cooperation to  
transfer successful  
experience to Arcachon



**Arca-Baie**, Arcachon Bay  
**Number of jobs : 15 FTE**



- ✓ *for those with more severe disabilities (work capacity: 30-70%)*
- ✓ *providing services to fishermen and oyster farmers and others (on several sites):*
  - *oyster farming*
  - *Gardening, including public spaces*
  - *decoration*
  - *cooking...*

**Legal set-up: Non-profit association** (*Association loi 1901*)



*From Sea to Shore; From Disabled to Qualified*



**Sheltered workshop “Terre-Mer Chantier”** (ACI), Marennes Oleron

**Inclusion site for the long-term unemployed**

- ✓ *For the long-term unemployed, with or without handicap*
- ✓ *Maintaining labour to sort out and recycle plastic maritime waste*
- ✓ *Building renovation, e.g. for city halls and private companies*

**Number of jobs: 15 FTE**

**Legal set-up: Non-profit association** (*Association loi 1901*)





*From Sea to Shore; From Disabled to Qualified*

**Thank you for your attention! ... any questions?**

